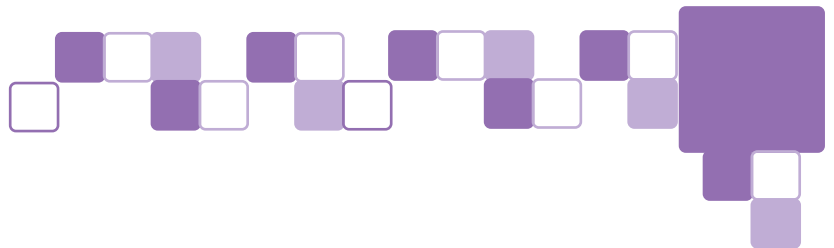


JOB:

ITEM #:

QUANTITY:



All Welded Tray Drying Rack

The "New" Kitchen Requirement.

A "must have" for schools, correctional facilities, and institutions, these Tray Drying Racks provide easy pan storage for drying. These racks conveniently stack pans and trays for drying without contact, allowing air to circulate freely for faster drying and to reduce "pan-to-pan" contamination.

Heavy Duty Shelves

Three and four tier units are available with 1.4" (40 slot) or 2.65" (20 slot) spacing per shelf for optimum storage of insulated and non-insulated trays.

All welded shelves are easy to clean with no cracks or crevices to trap dirt and debris. Extra-wide drainage wells help contain moisture.

To insure a proper fit, a sample tray MUST accompany your order.

Guaranteed

All units carry a **Lifetime Guarantee** against rust and corrosion as well as a **Five-Year Guarantee** against material defects and workmanship.



Tray Drying Rack — Model #96710

Extra-Wide Drainage Wells



T
R
A
Y

D
R
Y
I
N
G

R
A
C
K
S

.

A
L
L

W
E
L
D
E
D



Aluminum Food Handling, Storage, & Transport Solutions

New Age Industrial Corp., Inc. • 1000 E Hwy-36 • PO Box 520 • Norton, Kansas 67654

Phone#: 800.255.0104 • 785.877.5121 • Fax#: 877.877.7687 • 785.877.2616 • www.newageindustrial.com



TRAY DRYING RACKS • ALL WELDED

JOB:
ITEM #:
QUANTITY:

SPECIFICATIONS

SHELF FRAMES:

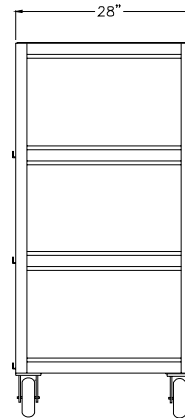
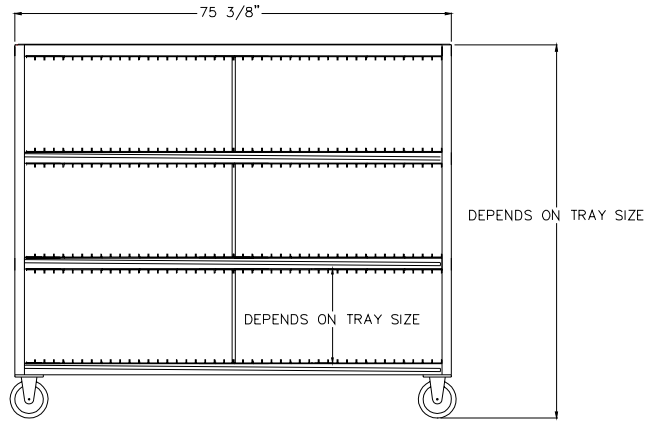
Shelf frames are constructed of 1-½" x 1-¾" round corner tube (.070" wall) extruded aluminum. Heavy duty tray guides (.090 thick) are placed at 1-½" and 2-¾" spacing. (Actual clearance • 1-½" spacing = 1.4" — 2-¾" spacing = 2.65") Each shelf is equipped with drainage well. Heavy duty center supports ½" x 1" tube help maintain rack stability and durability.

UPRIGHTS: 1-½" x .070" wall aluminum tube.

CASTERS:

The bottom shelf has ¾" x 4" x 4" pre-tapped caster plates welded in place to accept the 6" x 2" non-marking all swivel platform type casters. Three rear caster plates are shimmed to help water drain towards the trough.

Spacing depends on tray size.
Tray must be sent with order.



Model #96710

Model No	Size D-H-L	Tray Levels	Guide Clearance	Tray Cap.	Ship Wt.
96704 ...	28-½" x 66" x 58-¼"	3	2.65"	120	203#
96705 ...	28-½" x 82" x 58-¼"	4	2.65"	160	249#
96706 ...	28-½" x 66" x 69-¼"	3	2.65"	144	229#
96707 ...	28-½" x 82" x 69-¼"	4	2.65"	192	283#
96708 ...	28-½" x 66" x 63-½"	3	1.4"	240	228#
96709 ...	28-½" x 82" x 63-½"	4	1.4"	320	282#
96710 ...	28-½" x 66" x 75-½"	3	1.4"	288	263#
96711 ...	28-½" x 82" x 75-½"	4	1.4"	384	325#

Four 6" x 2" heavy duty platform type swivel casters (#C490)

All Units Must Ship Common Carrier

Options

- Corner Bumpers** - Add "B" suffix to model #
- Perimeter Bumper** - Add "PB" suffix to model #.
- Vertical Corner Bumpers** - Add "VB" suffix to model #.

Note: The bottom drainage channel is removed when perimeter and corner bumpers are used.

Aluminum Food Handling, Storage, & Transport Solutions

PHONE#: 800.255.0104 • 785.877.5121 • FAX#: 877.877.7687 • 785.877.2616